

# Fan type T-300K and T-300D

## Technical data

Motor: IP 55

### Fan T-300K

Supplied with the following motors:

kW	amp.	Weight of motor kg
22,0	39,0	180
30,0	52,3	246
37,0	64,5	256
45,0	78,0	328

### Fan T-300D

Supplied with the following motors:

kW	amp.	Weight of motor kg
30,0	52,3	246
37,0	64,5	256
45,0	78,0	328

### Max. min<sup>-1</sup>:

Standard impeller: 2.940 min.<sup>-1</sup>

Reinforces impeller: 2.400 min.<sup>-1</sup>

### Operating range T-impeller:

Air volume: 2.000 - 11.000 m<sup>3</sup>/h

Pressure: 3.500 - 10.800 Pa

### Power supply:

3 x 400 V - 50 Hz.

### Construction T-300K:

B3 - motor mounted on foot.

### Construction T-300D:

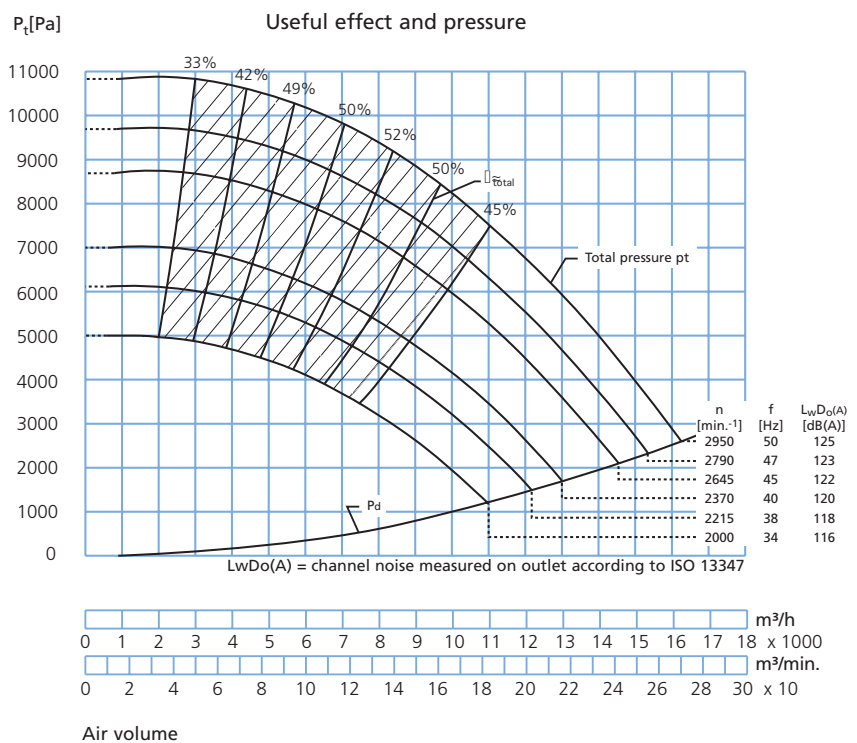
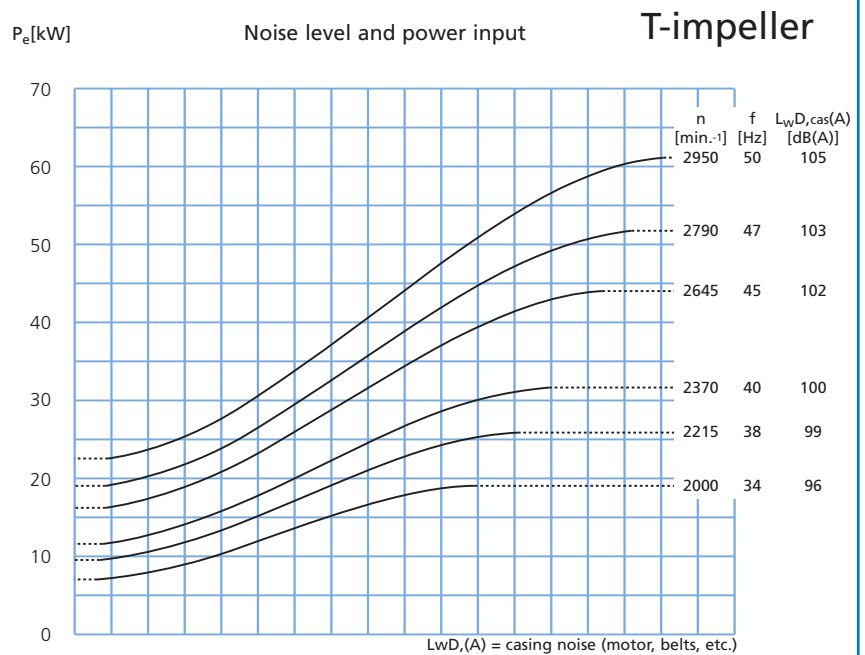
B35 - motor mounted with food and flange.

### T-impeller:

No. of blades, standard: 8 pcs.

Diameter:  $\phi$ 735 mm

Height: 130 mm



# Fan type T-300K and T-300D

## Technical data

Motor: IP 55

### Fan T-300K

Supplied with the following motors:

kW	amp.	Weight of motor kg
22,0	39,0	180
30,0	52,3	246
37,0	64,5	256
45,0	78,0	328

### Fan T-300D

Supplied with the following motors:

kW	amp.	Weight of motor kg
30,0	52,3	246
37,0	64,5	256
45,0	78,0	328

### Max. min<sup>-1</sup>:

Impeller: 2.950 min.<sup>-1</sup>

### Operating range P-impeller:

Air volume: 2.000 - 14.000 m<sup>3</sup>/h

Pressure: 2.500 - 10.800 Pa

### Power supply:

3 x 400 V - 50 Hz.

### Construction T-300K:

B3 - motor mounted on foot.

### Construction T-300D:

B35 - motor mounted with food and flange.

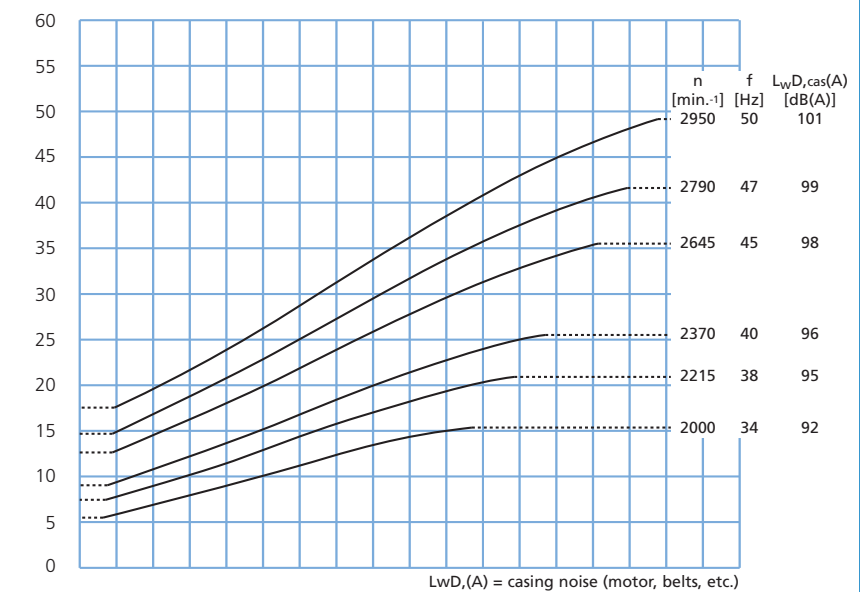
### P-impeller:

No. of blades, standard: 8 pcs.

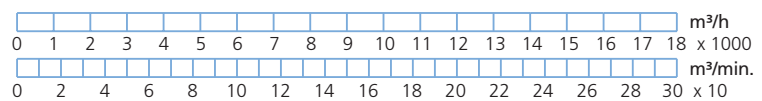
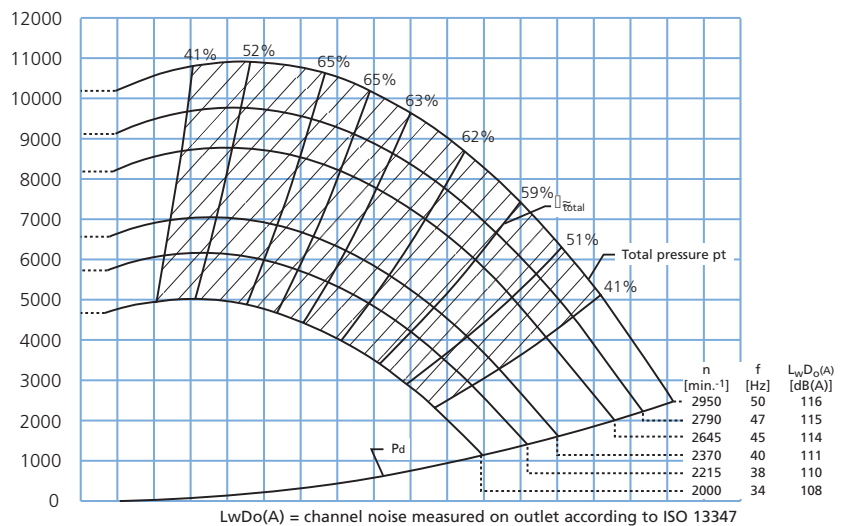
Diameter: ø740 mm

Height: 177 mm

### Noise level and power input P-impeller



### Useful effect and pressure



Air volume